

Management of insulin waste in in-home settings Bertha Gxowa Hospital- Gauteng Health

GGHH Agenda Goals

- Waste

Hospital Goal

- To ensure safe disposal of insulin waste in home settings.
- To eliminate the disposal of insulin waste in domestic waste bins.
- To promote proper management of insulin waste amongst chronic staff members and patients.

Progress Achieved

- Human health benefit – Patients and staff members who are diabetic have access to correct containers to safely dispose insulin waste.
- Environmental benefit- Insulin waste is no longer disposed in domestic waste bins.

The Issue

Bertha Gxowa Hospital serves diabetic patients with most seen within the facility given insulin for further management of the condition in home settings. Patients were given information on how to inject themselves with insulin, but there was no proper information on how to safely dispose of the sharps waste afterwards

The Service provider responsible for Health Care Risk Waste Management in Gauteng introduced 1.4l sharps containers that could be given to patients for proper disposal of insulin waste. Before containers could be given to patients, Bertha Gxowa Hospital Environmental Health Practitioners had to conduct a gap analysis to see if patients have knowledge on the management of insulin waste. The gap analysis was based on the following questions:

1. Q: Where do patients dispose insulin?

Answer: Most patient indicated that they normally discard insulin sharps waste in general waste bins, the original packaging or mayonnaise bottles.

2. Do patients have information on proper management of waste?

Answer: Patients had little information on proper management of insulin waste and the effects of unsafe disposal.

3. Who can be affected if the waste is disposed in the general waste stream?

Answer: patients indicated that they are aware that family members can get pricked if sharps are not properly disposed.

4. How can the facility ensure that patients dispose waste in the correct manner?

Answer: Ensure that all patients and staff members that receive insulin from the facility are given the sharps container at Pharmacy Department or OPD.

Insulin Sharps waste brought back to the facility disposed in original packaging and plastic liners



Sustainability Strategy Implemented

1. Contact points where diabetic patients are seen were identified (Pharmacy and OPD).
2. Stakeholder meetings between pharmacy, OPD and EHPs were held to share findings and to also come up with solutions to eliminate the existing problems.
3. Sufficient quantities of containers were ordered from the service provider
4. Diabetic sharps containers and distribution lists were given to pharmacy representatives and nurses in the Outpatient's department.
5. Educational posters/information brochure was made available in-patient waiting areas and distributed via the hospital social media platform (**Fig 1**).
6. Community awareness through social media (Facebook and twitter).
7. Monitoring of distribution patterns is done by Environmental Health Practitioners.
8. Roadshows and training.
9. Staff awareness through the internal Staff clinic.

Implementation process

Following the baseline assessment and feedback from staff members and patients, containers were requested from the service provider and roadshows were conducted to raise awareness on proper management of insulin in home settings.

The implementation & sustainability process of the project is coordinated by Environmental Health Practitioners, Pharmacy representatives and OPD staff members.

Posters were made available in-patient waiting areas and the community was informed through various social media platforms.

Tracking Progress

To Monitor progress of the project, distribution lists were made available at Pharmacy, Out Patient Department and the Environmental Health Unit to control issuing of containers and return of containers to the facility.

Progress is monitored monthly by Environmental Health Practitioners and Monthly generation rates are captured.

Challenges

- Consistency in completing the distribution list by staff members in OPD and Pharmacy Department.
- Not all patients return containers to the facility.

BERTHA GXOWA HOSPITAL

SAFE DISPOSAL OF INSULIN IN HOME SETTINGS



Did you know????
There is a **1.4L sharp container** given to patients who receive **insulin** from **Bertha Gxowa Hospital**, for safe disposal of insulin bottles and needles in home settings.

Where can I get it?
Bertha Gxowa Hospital Cares about patient safety. Kindly ask your Pharmacist for the Container as you collect your medication, and also ask for the Container from Nurses in the Outpatients Patients Department.

Do I return the container to the facility once it is full?
Yes!!! The container can be returned to the facility when you come for your next appointment or it can be dropped off at any local clinic





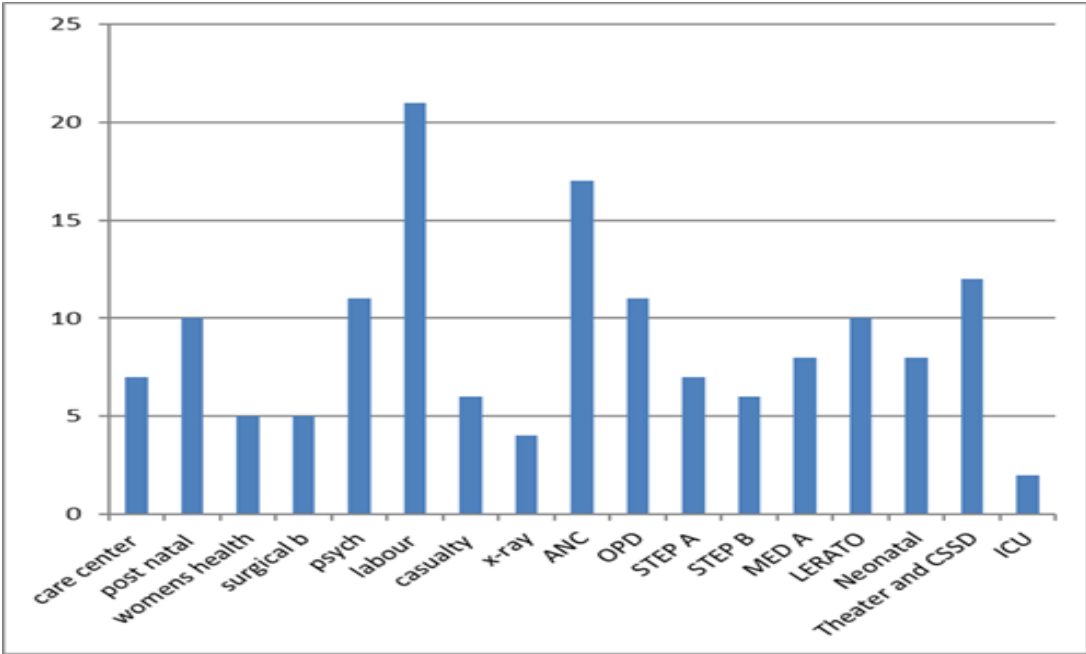
For More Info contact
Zam a Cele/Dimakatso Nhlapo: 011 278 7600
Dima.Nhlapho@gauteng.gov.za
Zam a.Cele2@gauteng.gov.za

Let's work together to keep our environment clean and safe.
keep the diabetic sharp container out of reach of children

Fig 1: Insulin Management Poster



Fig 4: Number of staff trained on insulin management April 2019(150)



Lesson learned

- Involve home based care workers to monitor during home visits if all patients that received containers from the facility do return them back.
- Continuous monitoring and support should be given to OPD and Pharmacy so that they are able to record number of containers issued to patients.
- Share highlights and challenges
- Awareness campaigns and roadshows

Next Steps

- Create an SMS system (reminder for patients to bring back containers to the facility or nearby clinic).
- Work closely with home based care workers.

Demographic information

Bertha Gxowa Hospital is a 328 bedded Hospital. The average length of stay of 4 days (norm 3-5 days). Outpatient's visits average is about 8440 per month. We are a satellite training centre for nursing and medical students.

Links

<https://www.facebook.com/996765437012220/photos/a.1003936906295073/2293429387345812/?type=3&theater\\gdhbgf fsrv01\Policies\Health Care Waste>

Main contact person information:

Dimakatso Nhlapo

Email: dima.nhlapho@gauteng.gov.za

Telephone n°: 0732603211

Secondary Contact

Zama Cele

Zama.cele2@gauteng.gov.za

0715135430